

Paradigm Farms Wellness Co.

A Proposed Cultivation Operation in Hollywood
Park

About Us

.Paradigm Farms is a collective of compassionate, college educated individuals who began cultivating our own medicine as a way to provide for ourselves and family, without the exorbitant costs of buying from a dispensary

.Our proprietors have worked extensively in California's burgeoning cannabis industry. We have a combined 25+ years of cultivation experience, in addition to our 15+ years of hands-on dispensary experience

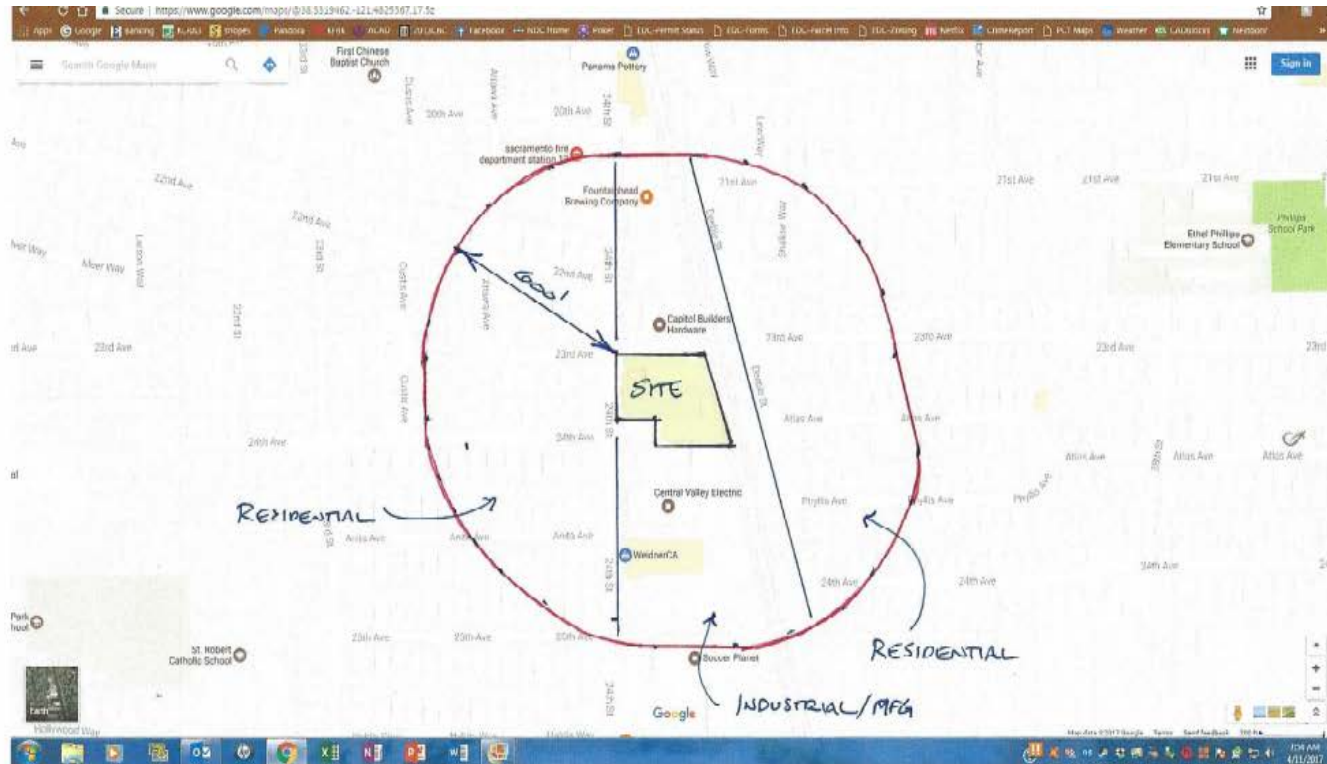
What Makes Us Different?

- .Our core mission is simple, we seek to actualize the potential to improve our patients' lives through the use of Medical Cannabis
- .We believe in using only holistic methods, as nature intended. The quality and integrity of our medicine is, and will always be our top priority. We are committed to growing plants free of hazardous pesticides, or any other harmful materials
- .Our cultivars have been specifically developed and rigorously tested through years of selective breeding to ensure quality and potency

What Makes Us Different?

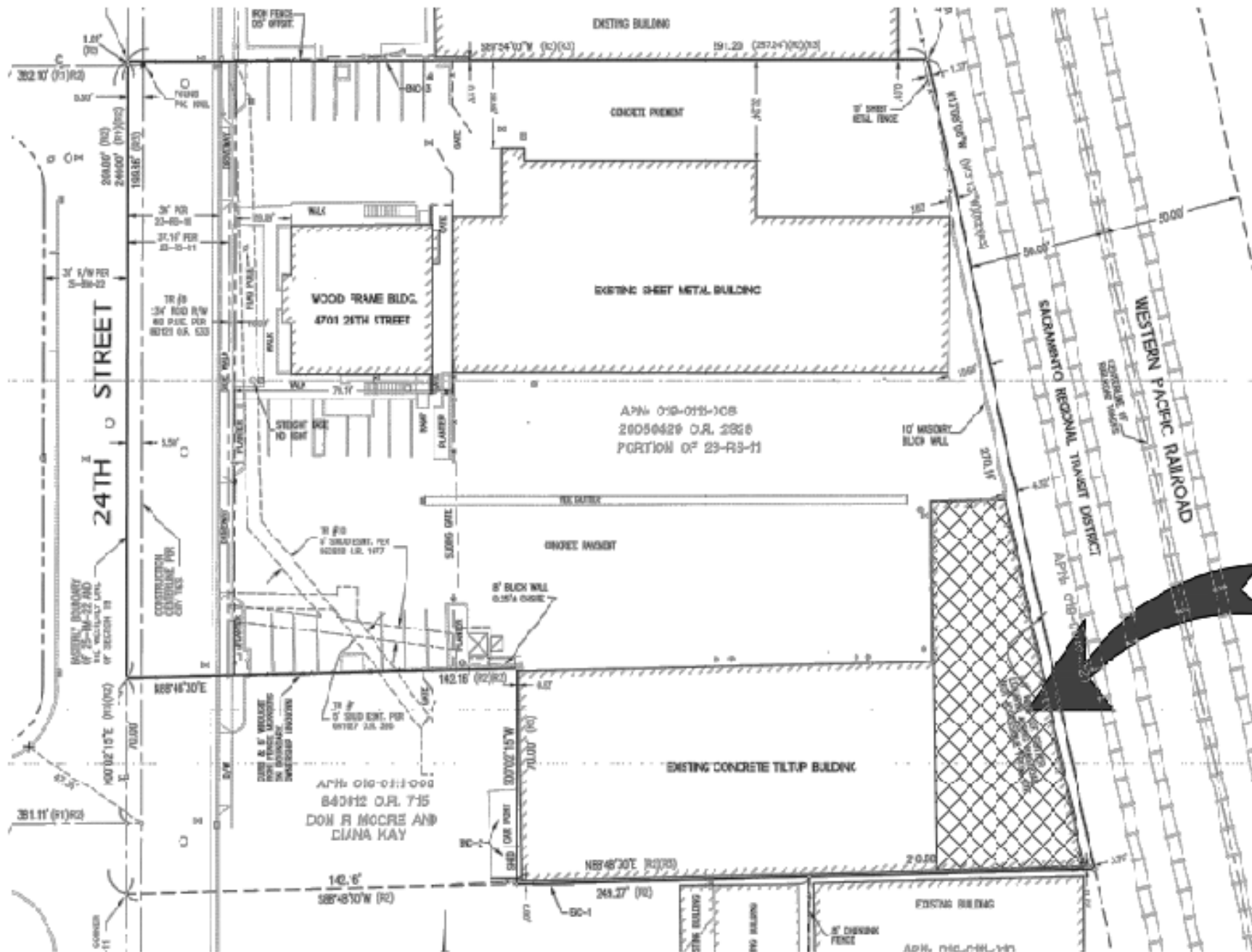
- As a collective, we are very passionate about enriching our local neighborhood as well as the planet we live on. Environmental best practices help ensure quality for the consumer while protecting the ecosystem
- Paradigm plans to utilize energy efficient lighting systems in order to reduce the burden on local utilities
- We plan to acquire a Clean Green certification to ensure quality medicine as well as fair laboring conditions.

About Our Location



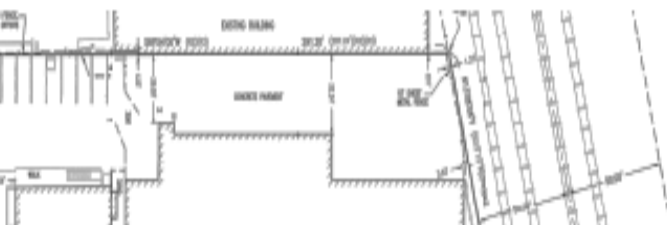
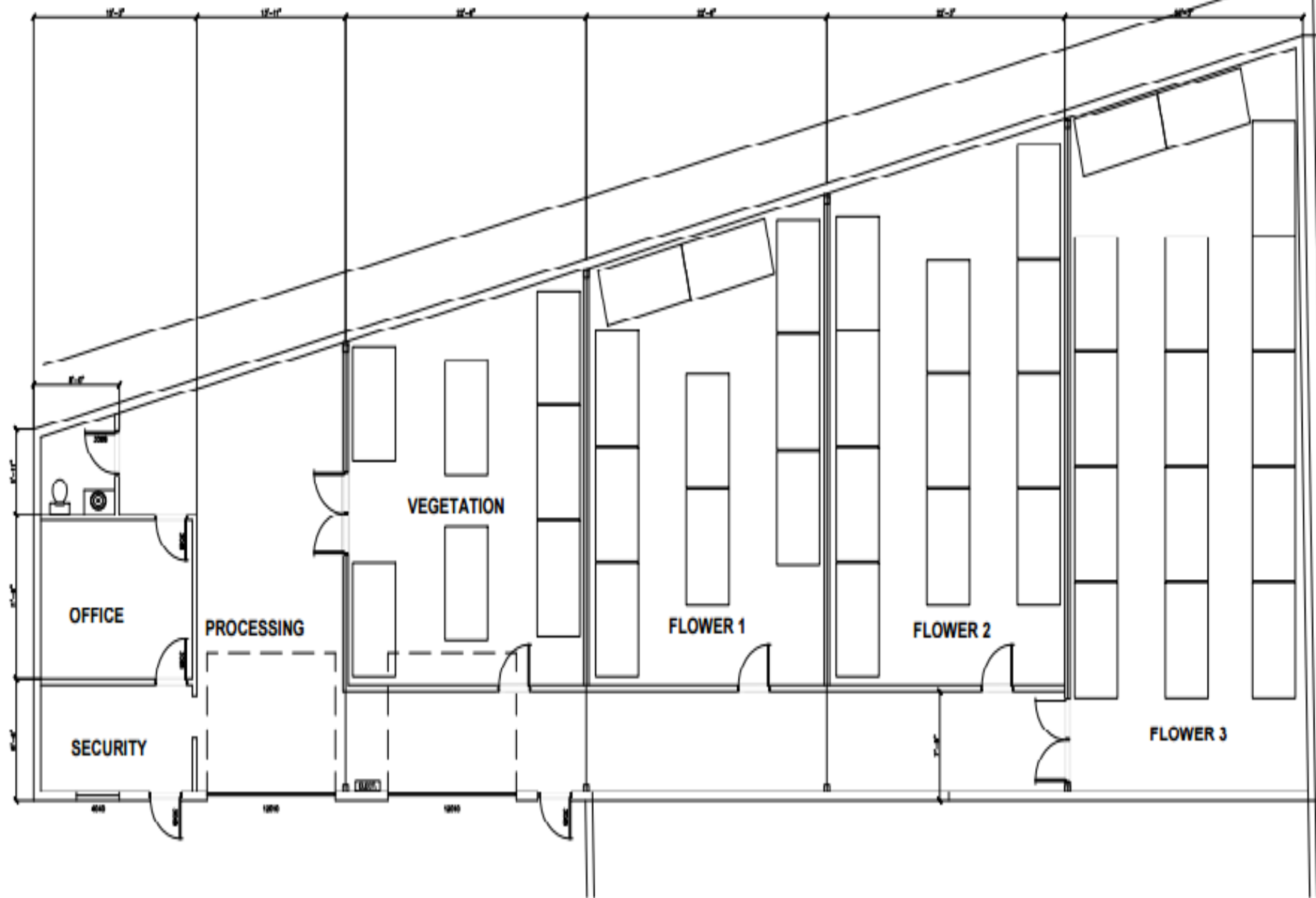
* NO PARKS OR SCHOOLS WITHIN 600' RADIUS OF PARCEL

Z17-063



EXISTING SITE PLAN

None



Security is Important

- .Security personnel will be on-site during operating hours to monitor surveillance cameras
- .24-hour monitoring and city mandated reporting will help to reduce crime in the Hollywood Park neighborhood
- .The facility will be closed to the public, and doors shall remain locked at all times.
- .Cash shall be transported off-site

Discretion is a Priority

- .We strive to maintain a low profile, our facility will be equipped with an air filtration system to eradicate cannabis related odors
- .We have chosen not to erect a sign so as not to advertise that cannabis is kept in the facility.
- .Traffic to and from the facility shall be minimized through carpooling and limited deliveries.

Enrichment

- .Paradigm has opted to pledge 1% of all gross receipts to directly benefit the surrounding neighborhood. This is in addition to other city taxes that will generate funds for schools and other public services
- .Paradigm plans to do business with other shops in the Hollywood Park neighborhood.(Horticultural supply, Security Monitoring, etc.)
- .As the business grows, we plan to create living wage jobs for those in the Sacramento area.
- .Passion for charitable efforts (Food drives, fundraisers,etc.)
- .Perhaps most importantly, we will create a safe, clean, quality product for qualified patients

The End

.Proceed to neighborhood Q&A